

# Manual Instruction

## 1. Product Introduction

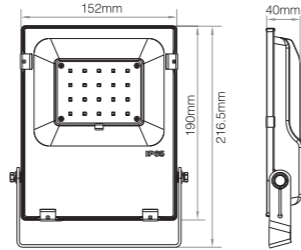
This product is made of a aluminium alloy bottom case and imported material covers with fashionable appearance, waterproof and dustproof, energy saving and environmental protecting, etc features. Widely used on park, apartment, gardens and street, etc.

- RGB+CCT 16 Millions of colors to choose
- 2.4G RF wireless transmission technology
- Dimmable Saturation control
- 100m super long distance signal transmitting&Mode Synchronization(Except 10W)
- Color temperature 2700-6500K
- Remote control Control distance 30m
- Beam Angle 110°
- Smart phone APP control (Tuya Zigbee gateway is needed)
- Waterproof and dustproof grade IP65
- Support third party voice control (Tuya Zigbee gateway is needed)

## 2. Technical Parameters

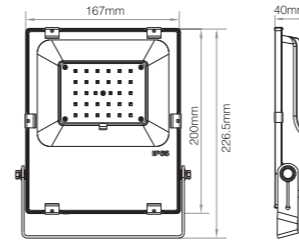
### FL02Z (20W)

Input Voltage: AC100~240V 50/60Hz  
Power: 20W  
Working Temperature: -20~45°C  
Color Temperature: 2700K~6500K  
Luminous Flux: 2200LM  
Light Efficiency: 110LM/W  
Standby Power Consumption: 0.6W  
CRI: >80  
PF: >0.9  
Beam Angle: 110°  
IP Rate: IP65  
RF: 2.4GHz  
Transmitting power: 6dBm  
Control Distance: 30m  
Lifespan: 50000 hours



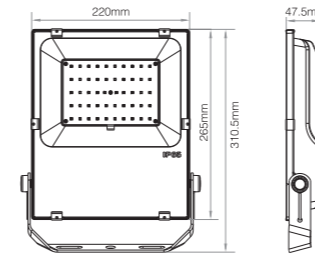
### FL03Z (30W)

Input Voltage: AC100~240V 50/60Hz  
Power: 30W  
Working Temperature: -20~45°C  
Color Temperature: 2700K~6500K  
Luminous Flux: 3300LM  
Light Efficiency: 110LM/W  
Standby Power Consumption: 0.6W  
CRI: >80  
PF: >0.9  
Beam Angle: 110°  
IP Rate: IP65  
RF: 2.4GHz  
Transmitting power: 6dBm  
Control Distance: 30m  
Lifespan: 50000 hours



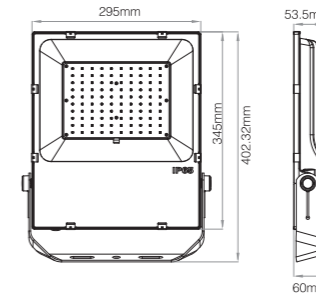
### FL04Z (50W)

Input Voltage: AC100~240V 50/60Hz  
Power: 50W  
Working Temperature: -20~45°C  
Color Temperature: 2700K~6500K  
Luminous Flux: 5500LM  
Light Efficiency: 110LM/W  
Standby Power Consumption: 0.7W  
CRI: >80 PF: >0.9  
Beam Angle: 110°  
IP Rate: IP65  
RF: 2.4GHz  
Transmitting power: 6dBm  
Control Distance: 30m  
Lifespan: 50000 hours

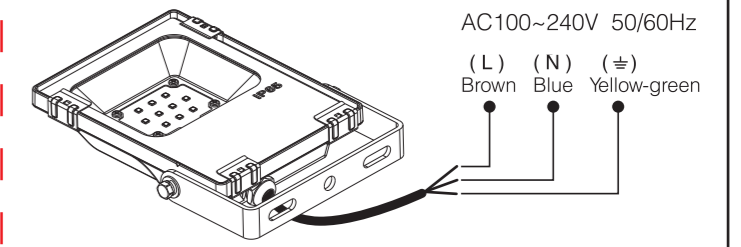


### FL05Z (100W)

Input Voltage: AC100~240V 50/60Hz  
Power: 100W  
Working Temperature: -20~45°C  
Color Temperature: 2700K~6500K  
Luminous Flux: 10500LM  
Light Efficiency: 105LM/W  
Standby Power Consumption: 0.65W  
CRI: >80  
PF: >0.9  
Beam Angle: 110°  
IP Rate: IP65  
RF: 2.4GHz  
Transmitting power: 6dBm  
Control Distance: 30m  
Lifespan: 50000 hours



## 4. Connection Diagram



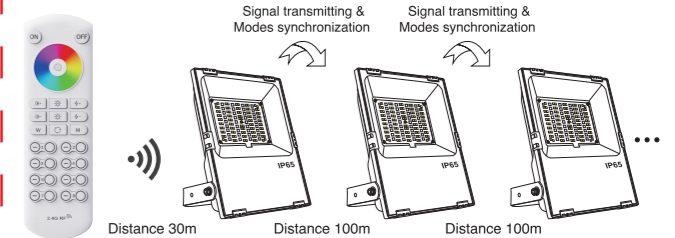
FL02Z/FL03Z/FL04Z/FL05Z

## 5. Super Long Distance Signal transmitting

One lighting fixture can transmit the signals from the remote control to another lighting fixture within 100m, as long as there is a lighting fixture within 30m, the remote control distance can be limitless.

## 6. Modes synchronization

Different lighting fixture can work synchronously when they are started at different times, controlled by the same remote, under same dynamic mode and within 100m distance.



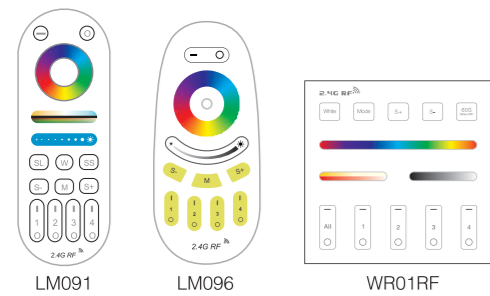
20/30/50/100W Zigbee 3.0 RGB+CCT LED Floodlight  
Model No.: FL02Z/FL03Z/FL04Z/FL05Z

## 3. Dynamic Mode Sheet

Number	Dynamic Mode	Brightness / Saturation / Speed
1	Riotous Profusion	Adjustable
2	Blue Sky	
3	Gorgeous Color	
4	Ocean	
5	Dreamlike	
6	Christmas	
7	Forest	
8	Birthday	
9	Blomming	

## 7. Compatible Remote Control

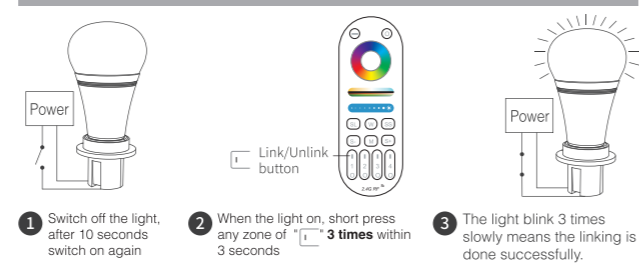
Compatible with these remote controls (Purchased separately)



## Linking&Unlinking

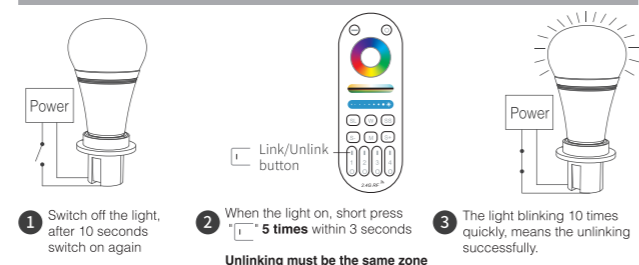
**Remark:** The light can be working after linking with the remote controller.

### Linking Instructions



⚠ If the light not blink slowly the linking failed, Pls switch off the light again, and follow the above steps again.

### Unlinking Instructions



⚠ If the light not blink quickly the unlink failed, pls switch off the light again, and follow the above steps to unlink again.

### NOTE:

Lighting can be working after linking with remote; for more details, pls read the remote instruction.

## 8. Attention

- When install the lighting fixtures, pls switch off the power to make sure the safety.
- The working power is high voltage alternating current, so it must be far away from people and must with ground connection.
- As the power is large, user must choose suitable power cable when connecting.
- Non-professional user cannot dismantle the lighting fixtures directly, otherwise, it may cause fire and electric shock.
- Please do not use lighting fixtures around the mental area and high magnetic field, otherwise, it will badly affect the control distance.
- Users must be correct, strict and solid to install the lighting fixtures; do not use the lighting fixtures on strenuous vibration area.



## Zigbee 3.0 APP Control Instruction

### 1. Download and install [Tuya Smart] APP or [Smart Life] APP

Search for [Smart Life] in Apple or Google store or scan following QR code to download and install the app.

Please click " Register " button to create account while using it in the first time, Log in directly if you already had account.



### 2. Connect to Smartphone

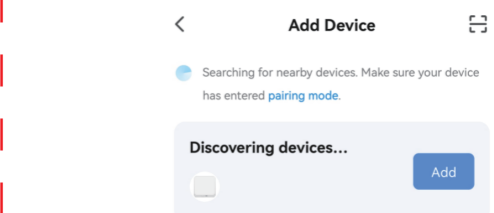
You must link the Tuya Zigbee 3.0 Gateway first to the smartphone, then add the Zigbee floodlight to zigbee gateway for smartphone control.

(1). How to connect zigbee gateway to smartphone.(Note: All Tuya Zigbee 3.0 gateway in market can works on our Zigbee floodlight controller; Here we use our Zigbee 3.0 gateway for example).

First, Power the zigbee gateway, and long press the "SET" button until the red indicating lamp blinking.



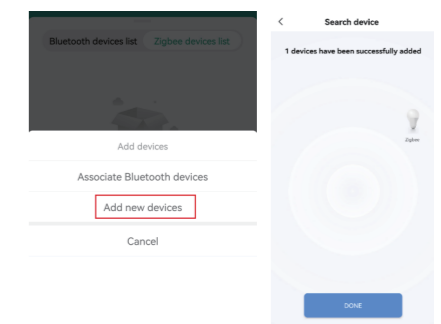
Second, when the red indicating lamp blink, open the Smart Life APP, and press "Add Device". It will discover the new device automatically, then Press "Add" to complete the linking.



(2). Add the Zigbee floodlight to the linked zigbee gateway.

First, power ON-OFF 3 times(ON-OFF-ON-OFF-ON), when the purple light blinking 3 times means the Zigbee floodlight come into smart link mode. (Note: when the Zigbee floodlight on the smart link mode, please finish the linking within 3 minutes, after 3 minutes the Zigbee floodlight will stop smart link mode, you need to do the above steps again).

Second, Press "Add new devices" on the APP, it will automatically find the zigbee device, then complete the linking. Added device will be displayed on the homepage after added successfully, then Click device you want to control to enter the control interface.



Note: Our Zigbee floodlight also works on Philips Hue Bridge and Samsung Smartthings gateway for smartphone controlling.