

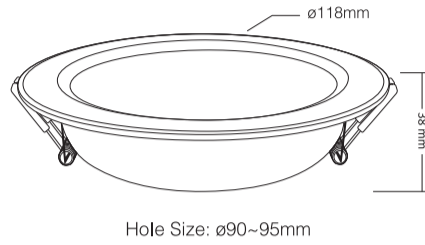
Manual Instruction

Zigbee 3.0 RGB+CCT LED Downlight

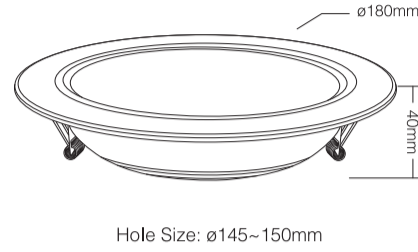
Model No.: LM070-LM072

2. Parameters

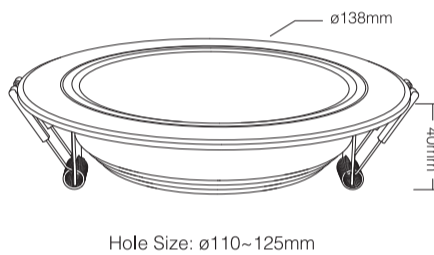
6W RGB+CCT LED Downlight
 Model No.: LM070
 Input Voltage: AC100~240V 50/60Hz
 Power: 6W
 Working Temperature: -20~60°C
 Color Temperature: 2700K~6500K
 Luminous Flux: 600LM
 Luminous Efficiency: 85LM/W
 CRI: >80
 PF: >0.5
 Lifespan: 50000 hours
 Beam Angle: 120°
 RF: 2.4GHz
 Control Distance: 30m
 Transmitting Power: 6dBm
 Material: Aluminum+PC Cover
 Product Weight: 160g



12W RGB+CCT LED Downlight
 Model No.: LM072
 Input Voltage: AC100~240V 50/60Hz
 Power: 12W
 Working Temperature: -20~60°C
 Color Temperature: 2700K~6500K
 Luminous Flux: 1100LM
 Luminous Efficiency: 88LM/W
 CRI: >80
 PF: >0.5
 Lifespan: 50000 hours
 Beam Angle: 120°
 RF: 2.4GHz
 Control Distance: 30m
 Transmitting Power: 6dBm
 Material: Aluminum+PC Cover
 Product Weight: 320g



9W RGB+CCT LED Downlight
 Model No.: LM071
 Input Voltage: AC100~240V 50/60Hz
 Power: 9W
 Working Temperature: -20~60°C
 Color Temperature: 2700K~6500K
 Luminous Flux: 720LM
 Luminous Efficiency: 80LM/W
 CRI: >80
 PF: >0.5
 Lifespan: 50000 hours
 Beam Angle: 120°
 RF: 2.4GHz
 Control Distance: 30m
 Transmitting Power: 6dBm
 Material: Aluminum+PC Cover
 Product Weight: 200g

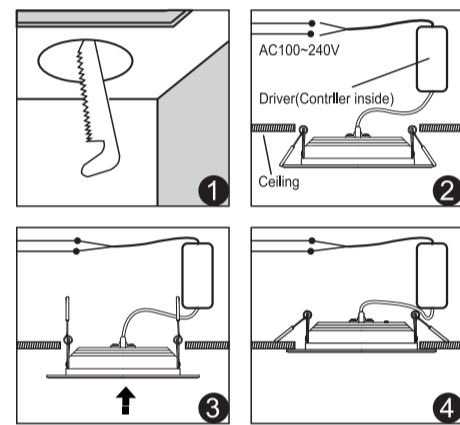


1. Features

- RGB+CCT
16 Millions of colors to choose
- Color temperature
2700~6500K
- Dimmable &
Saturation control
- 2.4G RF wireless
transmission technology
- Signal transmitting &
Modes synchronization
- Remote control
Control distance 30m
- Smart phone APP control
(Tuya Zigbee gateway is needed)
- Support third party voice control
(Tuya Zigbee gateway is needed)

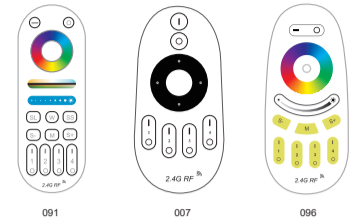
3. Instructions

- Please open the hole on the ceiling according of Diagram 1. (For the size of the hole, please refer to the parameters of the corresponding model.)
- Connect the driver properly according to the wire connection Diagram 2. And then put the driver and wire into the ceiling from the hole.
- Push in the two spring elements, make sure that they are deployed and anchored on the back of the ceiling Diagram 3 and 4.



4. Link/Unlink

Compatible with these remote controls (Purchased separately)



NOTE:
Lighting can be working after linking with remote; for more details, pls read the remote instruction.

Dynamic Mode Sheet

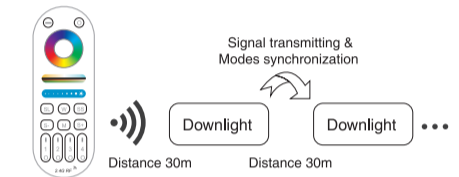
No.:	Dynamic Mode	*Brightness / Saturation / Speed*	Auto-Sync
1	Riotous Profusion	Adjustable	Under same remote, same zone, same speed and dynamic mode, lights can be auto-sync
2	Blue Sky		
3	Gorgeous Color		
4	Ocean		
5	Dreamlike		
6	Christmas		
7	Forest		
8	Birthday		
9	Blooming		

Signal transmitting

One Downlight can transmit the signals from the remote control to another Downlight within 30m, as long as there is a Downlight within 30m, the remote control distance can be limitless.

Modes synchronization

Different Downlight can work synchronously when they are started at different times, controlled by the same remote, under same dynamic mode and within 30m distance.



Attention

- When install the lighting fixtures, pls switch off the power to make sure the safety.
- Please check whether the input voltage supply is in accordance with the lighting fixtures.
- Non-professional user cannot dismantle the lighting fixtures directly, otherwise, it may cause fire and electric shock.
- Please do not use lighting fixtures around the mental area and high magnetic field, otherwise, it will badly affect the control distance.



Zigbee 3.0 APP Control Instruction

1. Download and install [Tuya Smart] APP or [Smart Life] APP

Search for [Smart Life] in Apple or Google store or scan following QR code to download and install the app.
 Please click "Register" button to create account while using it the first time, Log in directly if you already had account.



2. Connect to Smartphone

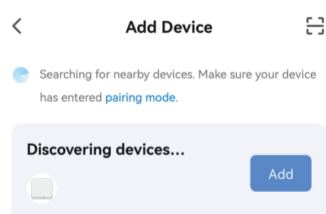
You must link the Tuya Zigbee 3.0 Gateway first to the smartphone, then add the zigbee downlight to zigbee gateway for smartphone control.

- How to connect zigbee gateway to smartphone. (Note: All Tuya Zigbee 3.0 gateway in market can works on our Zigbee controller; Here we use our Zigbee 3.0 gateway for example).

First, Power the zigbee gateway, and long press the "SET" button until the red indicating lamp blinking.



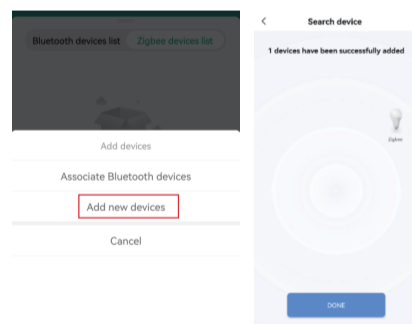
Second, when the red indicating lamp blink, open the Smart Life APP and press "Add Device". It will discover the new device automatically, then Press "Add" to complete the linking.



- Add the Zigbee downlight to the linked zigbee gateway.

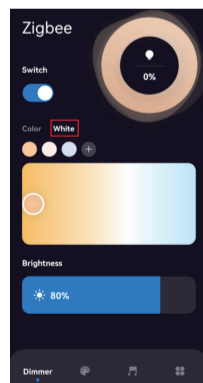
First, power ON-OFF 3 times(ON-OFF-ON-OFF-ON) or long press linked remote zone ON button, when the purple light blinking 3 times means the downlight come into smart link mode. (Note: when the downlight on the smart link mode, please finish the linking within 3 minutes, after 3 minutes the downlight will stop smart link mode, you need to do the above steps again).

Second, Press "Add new devices" on the APP, it will automatically find the zigbee device, then complete the linking. Added device will be displayed on the homepage after added successfully, then Click device you want to control to enter the control interface.

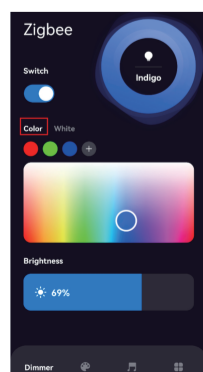


3. APP Control

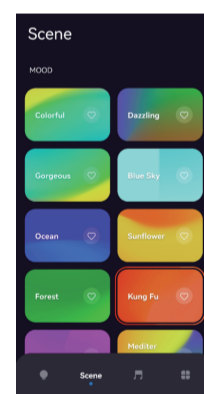
- When you come into control page, Click [dimmer] on the bottom left corner, then click [white], you can control the white light with color temperature, brightness, and save the white light you like.



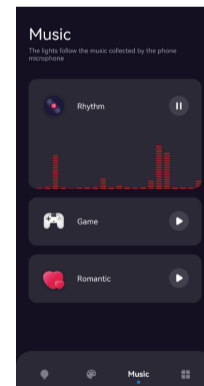
Click [Color], you can control color change, brightness, saturation and save colors you like.



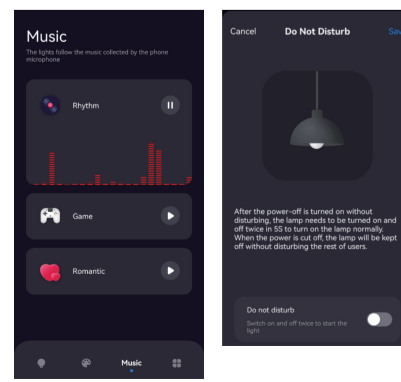
- Click [Scene] on the bottom, you can get into Scene control page.



- Click [Music], you can come into Music rhythm control page.



- Click [More] to come into More function including Schedule and Do Not Disturb. Do not disturb function, pls read below pics carefully.

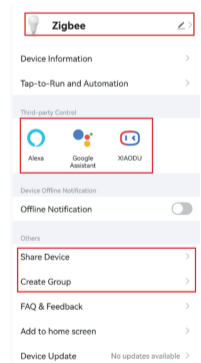


- Device name editing, Third-party Control, Device Sharing and Group Control.

- Click [More] on the top right corner of control page to come into extra function.
- Click icon under third-party control to view detailed description of third-party control
- Click [Share Device] to share the device to family and friends.

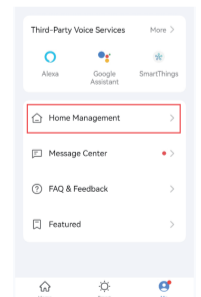
Note: to share device, you need to create a home first, then add members in to this home. Please read 6th instructions for how to make home management.

- Click "Create Group" and follow APP prompt after setting is completed, the devices can be controlled by group.

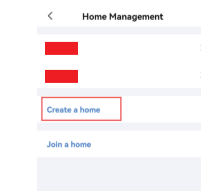


- How to make Home Management for Device Sharing.

- Click [Home Management] on the home page control interface, then click [Home Management] to enter Home management making.



- Click [Create a home] to complete home management, then you can add members on the home, and share device to your home number.



Note: Our Zigbee 3.0 downlight also works on Philips Hue Bridge and Samsung Smartthings gateway for smartphone controlling.