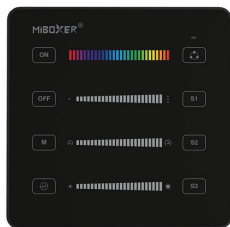


B6 SPI-Panel-Fernbedienung

Model No. : B6

Product Feature

- Align the color and adjust length (number of Pixel pt) of SPI strip, select dynamic mode and control speed, save scene
- 2.4G wireless transmission technology with fast speed for transmitting, stable signal and strong ability for anti-interference
- Control multi devices at the same time, support communication with multi devices
- Changing dynamic mode, color, brightness and dynamic lighting feature
- Editing width and color for dynamic mode
- Setting time and color for ON/OFF
- Working with multi controllers (control distance 30m)
- Magnetic holder with simple installation
- Wide application for commercial or home lighting, create ambience lighting

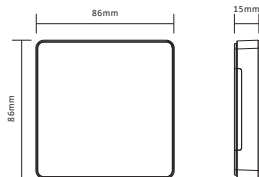


Product Parameter

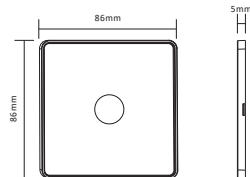
Product Name:	B6 SPI remote
Model No.:	B6
Working voltage:	3V(AAA*2PCS)
Standby consumption:	15μA
Transmitting:	6dBm
Protocol:	2.4GHz RF
Modulation:	GFSK
Control Distance:	30M

Working temperature:	-10~40°C
EMC standard:	ETSI EN 301 489-1 V2.2.3 ETSI EN 301 489-3 V2.3.2
Security standard:	EN 61347-2-11:2001+A1:2019 EN 61347-1:2015+A1:2021 EN 62493:2015+A1:2022
Radio equipment:	ETSI EN 300 400 V2.2.1
Certification:	CE、EMC、LVD、RED

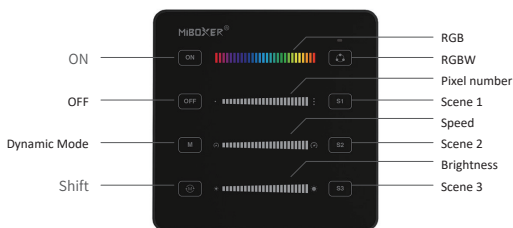
Remote



Holder



Indication



*Short press to change color of dynamic mode
Long press to change direction of dynamic mode

Schlüsselbeschreibung

RGBW:

change color of pure static lighting

Shift:

Short press to change color of dynamic mode
Long press to change direction of dynamic mode

Dynamic mode:

short press to change mode

Scene:

Long press to save scene

RGB:

change color

Pixel Number:

change length or width
*(more information in setting)

Speed:

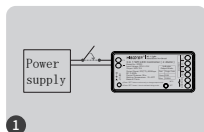
change speed

Brightness:

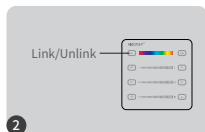
Dim brightness

Link/Unlink

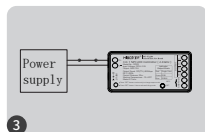
Link controller must link with remote before using it



turn off light 10 seconds and turn on again



short press "ON" 3 times within 3 seconds

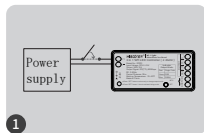


link is done once light flashes 3 times slowly

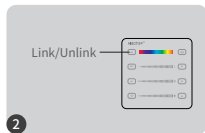


Link is failed if light doesn't flash, please repeat above steps
(Attention: can not link again if remote already finished linking)

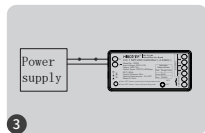
Unlink:



turn off light 10 seconds and turn on again



short press "ON" 5 times within 3 seconds



link is done once light flashes 10 times quickly



Unlink is failed if light doesn't flash, please repeat above steps
(Attention: no need to unlink if the light never be linked)

Setting

Setting the color sequence from strip light

Long press "OFF" 5 seconds until lighting up single color



Flashing red, short press red area



Flashing green, short press green area



Flashing blue, short press blue area



Flashing white, short press "♻️" button

The system automatically closes after the setting is complete

Setting Length (Pixel number: mini 8pt, max 2048pt)

Long press "ON" 5 seconds until lighting up white color and last point is blinking



Sliding to change length



Short press to add one pt, long press to add pt continuously



Short press to reduce one pt, long press to reduce pt continuously

Short press "ON/OFF" to leave out once setting is done

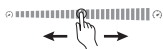
Setting width for dynamic mode

Sliding pixel number to change pt number and get different length for dynamic mode which have various sections.

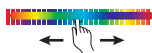


Setting time and color for ON/OFF

Short press "OFF" 5 seconds to enter into running ON/OFF



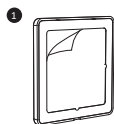
Sliding "Speed" to set time for ON/OFF



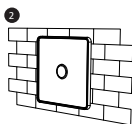
Sliding "RGB" to set color for ON/OFF

Short press "ON/OFF" to leave out once setting is done

Installation



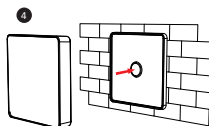
1 Rip the double-sided tape on the back of the base



2 Attach the base securely



3 Install the battery (2*AAA)



4 The remote is magnetized on the base

Attention:

1. Only compatible with Miboxer SPI led controller
2. Don't use it in humidity or high temperature area, please take out battery if don't use it frequently and keep it in dry or static electricity area
3. Don't use it near metal or strong magnetic area, it will affect signal and lost distance.



Made in China