

User Guide

4-Key Panel RF Remote Controller

The PF series RF wireless push remote controller is designed control single color, dual color, RGB or RGBW LEDs with both switch and brightness adjustment function. Smooth and accurate color adjustment can be achieved by buttons. The remote controller can control 1 zone with endless receivers and all receivers can be controlled synchronously. The push remote can be wall mounted or stuck on wall easily by 3M glue.

Feature

- Apply to single color, dual color, RGB or RGBW LED controller, dimming driver or smart lamp.
- Adopt 2.4GHz wireless technology, remote distance up to 30m.
- Each remote can match one or more receiver.
- CR2032 button battery power supply.
- Removeable and stick anywhere easily, or mount on wall use panel base.

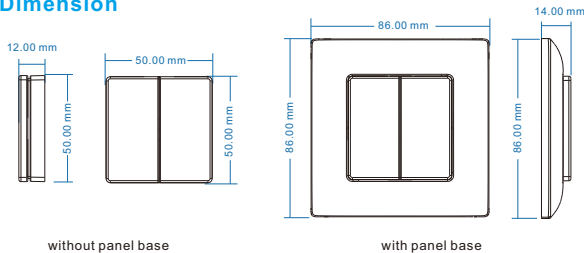
Technical parameter

- Output signal: RF(2.4GHz)
- Working voltage: 3VDC(CR2032)
- Working current: < 5mA
- Standby current: < 2 μ A
- Standby time: 2 years
- Remote distance: 30m

Model table

Model	Name	Application
PF1	Dimming 4-key remote	single color
PF1-2	2 zones dimming 4-key remote	single color
PF2	Color temperature 4-key remote	dual color(WW+CW)
PF3	RGB/RGBW 4-key remote	RGB/RGBW

Dimension



Match guide

Remote match with 2.4G RF controller, dimming driver or smart lamp. there are two kinds of method to match receivers.

• Use Match key

Match with controller(with match key)

1. Match: Short press match key, within 5s, press on/off key of the remote.
2. Delete: Long press match key for 5s, delete all matched remote.

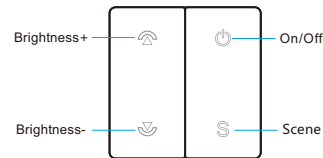
• Use Power-up

Match with controller(without match key), dimming driver or smart lamp

1. Match: Switch off the power, then switch on power again, short press on/off key 3 times quickly within 5s after power on, the link is done once the light blinks 3 times.
2. Delete: Switch off the power, then switch on power again, short press on/off key 5 times quickly within 5s after power on, the unlink is done once the light blinks 5 times.

Knob function

1. PF1 Single color dimming remote



On/Off: Turn on or off light.

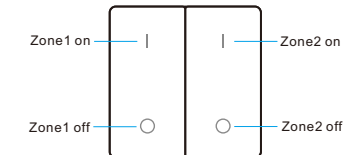
Brightness+/-: Adjust brightness.

Short press 10 levels, long press 1-5s for continuous 256 levels adjustment.

Scene: Brightness memory.

Short press recall the scene, long press 2s save the current brightness into the scene.

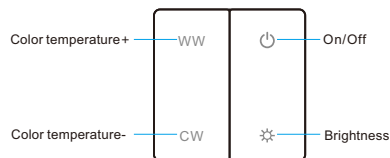
2. PF1-2 2 zone single color dimming remote



Zone 1-2 on: Short press turn on zone light, long press 1-5s to increase brightness continuously.

Zone 1-2 off: Short press turn off zone light, long press 1-5s to decrease brightness continuously.

3. PF2 Color temperature remote



On/Off: Turn on or off light.

Brightness: Adjust brightness.

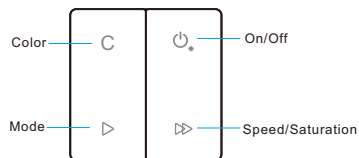
Short press 10 levels, long press for continuous 256 levels adjustment.

Color temperature+/-: Adjust color temperature.

Short press 11 levels, long press 1-5s for continuous 256 levels adjustment.



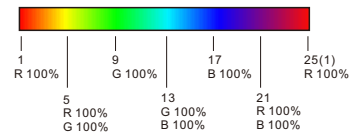
4. PF3 RGB/RGBW remote



On/Off: Short press turn on or off light, long press 1-5s to adjust brightness continuously.

Color: Change static RGB color.

Short press get 24 kinds static color, long press for continuous static color adjustment.



Mode: Change dynamic mode.

Short press run next mode, long press 2s run mode-cycle.

Speed / Saturation:

For dynamic mode, adjust speed.

Short press 10 levels, long press 2s get the default speed.

For static color, adjust saturation, namely change current static color to mixed white slowly.

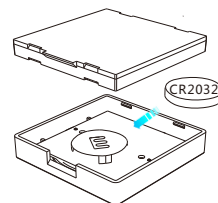
Short press 11 levels, long press 1-5s for continuous 256 levels adjustment.

RGB light:

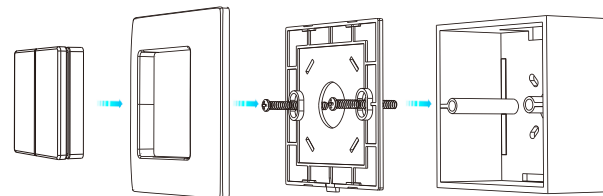
long press Mode + Speed/Saturation key to adjust W channel brightness simultaneously.

Installation diagram

• Replace battery



• Mount on wall with 86x86 European standard panel base



Safety information

1. Read all instructions carefully before you begin this installation.
2. When installing battery, pay attention to the battery positive and negative polarity.
A long time without the remote control, remove the battery.
When remote distance becomes smaller and insensitive, replace the battery.
3. If no response from the receiver, please re-match the remote.
4. Gently handle remote, beware of falling.
5. For indoor and dry location use only.