

60W DALI DT8 NFC Enabled LED Driver(Constant Current)



Important: Read All Instructions Prior to Installation

Function introduction



Product Data

Output	LED Channel	2
	DC Voltage	10-54V
	Current	900-1700mA via NFC setting; Min. current gear lower to 0.1mA, Default 1500mA
	Current Accuracy	±3% (±1% @ Certain full load) @ full load
	Rated Power	Max. 60W
Input	Voltage Range	220-240VAC/ 176-280VDC
	Frequency Range	0/50/60Hz
	Power Factor (Typ.)	> 0.98 @ 230VAC Full load
	Total Harmonic Distortion	THD ≤ 5% (@ full load / 230VAC)
	Efficiency (Typ.)	> 87% @ 230VAC full load
	AC Current (Typ.)	0.4A @ 230VAC
	Inrush Current (Typ.)	Max. 25.9A at 230VAC; 148µs duration
	Leakage Current	< 5mA / 230VAC
	Standby Power Consumption	< 0.5W
Control	Anti Surge	L-N:2KV
	Dimming Interface	DALI Device Type 8 (DALI consumption < 2mA)/ AC Push
	Dimming Range	0.01%-100% @ Max current
	Dimming Method	Amplitude/CCR dimming
	Dimming Curve	Linear/ Logarithmic optional

Protection	Short Circuit	Yes, recovers automatically after fault condition is removed
	Over Current	Yes, recovers automatically after fault condition is removed
	Over Temperature	Yes, recovers automatically after temperature drop
Environment	Working Temp.	-25°C ~ +60°C
	Max. Case Temp.	TC=90°C
	Working Humidity	10% ~ 95% RH non-condensing
	Storage Temp. & Humidity	-40°C ~ +80°C, 10% ~ 95% RH
Safety & EMC	Safety Standards	EN61347-1, EN61347-2-13
	Withstand Voltage	I/P-O/P: 3.75KVAC
	Isolation Resistance	I/P-O/P: 100M Ohms / 500VDC / 25°C / 70% RH
	EMC Emission	En55015, EN61000-3-2, EN61000-3-3
	EMC Immunity	En61547, EN61000-4-2,3,4,5,6,8,11
Others	MTBF	191350H, MIL-HDBK-217F @ 230VAC full load and 25°C ambient temperature
	Dimension	285x30x21mm (L*W*H)
	Warranty	5 Years

- In compliance with IEC 62386-101:2014, IEC 62386-102:2014, IEC 62386-207 Ed2, IEC 62386-209
- Built-in DALI-2 interface, DALI DT8 device
- Dimmable LED driver with linear metal housing. Max. output power 60W
- 900-1700mA current selectable via NFC program tool. Min. current gear lower to 0.1mA
- DALI Address/Group/Scene setting via NFC program tool.
- Class II power supply, isolated design
- High power factor and efficiency
- To switch and dim LED lighting luminaries, enable tunable white control
- Amplitude/CCR dimming, smooth and deep dimming
- Compatible with universal DALI masters that support DT8 commands
- DALI-251/252/253 Enabled, DALI data inside
- IP20 rating, suitable for indoor LED lighting applications
- 5 years warranty

Safety & Warnings

- DO NOT install with power applied to the device.
- DO NOT expose the device to moisture.

Operation

With DALI master

1. DALI Address

1 DALI address for 2 channels output are assigned by DALI Master controller automatically, please refer to user manuals of compatible DALI Masters for specific operations.

With NFC Programming devices

Note

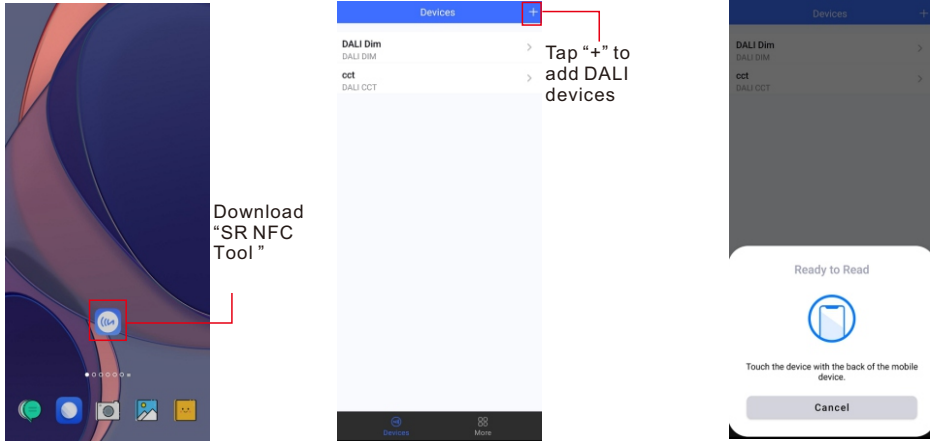
1) Do wiring according to the wiring diagram and power on the DALI system .

2) Recommend setting parameters without power-on the DALI devices .

2) Please make sure your mobile phone has NFC function and enable it .

Working with “SR NFC Tool” APP

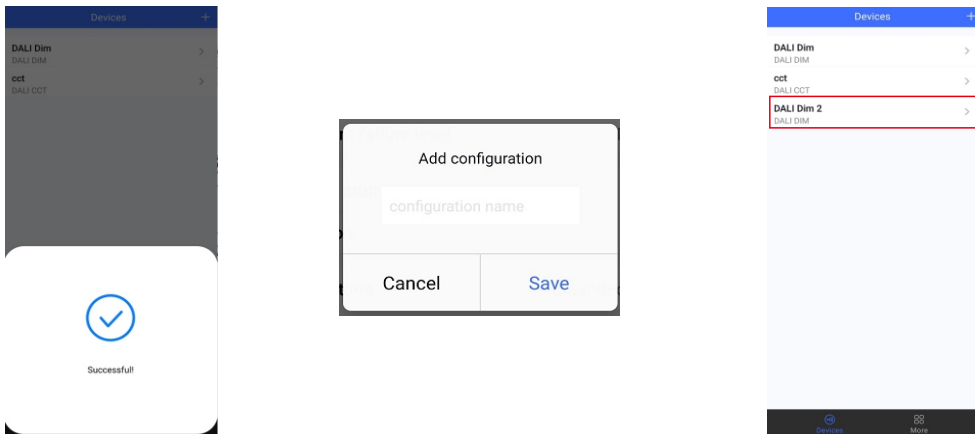
Step 1: Download the APP (searching “SR NFC Tool” from App Store and Google Play) .
Then open the APP .



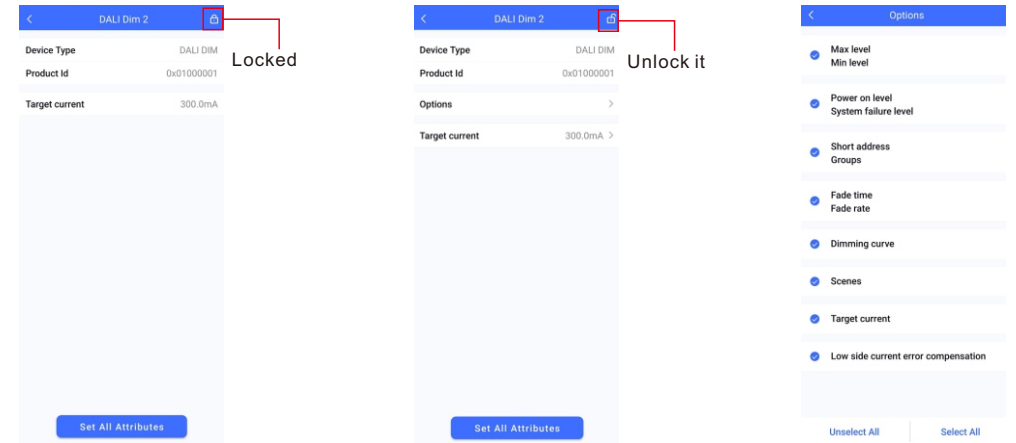
Download
“SR NFC
Tool”

- Note:**
1. Please Make sure that you have enabled NFC function with your mobile phone/ tablet .
 2. Please Make sure that the “NFC position” is matched.
 3. Please do not power on the device before setting.
 4. If you can't download “SR NFC Tool”. Please contact with us.

Step 2: Add device, and name it as you wish.

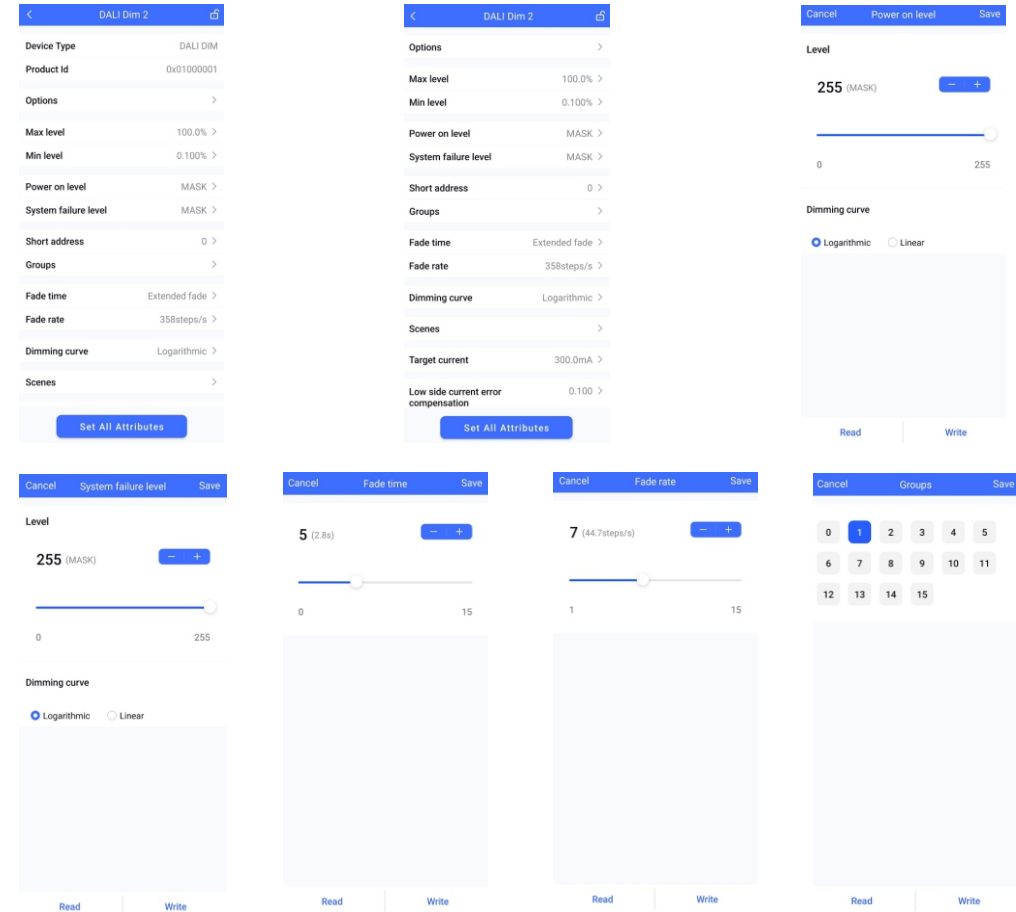


Step 3: Unlock device, enter parameters configuring page.

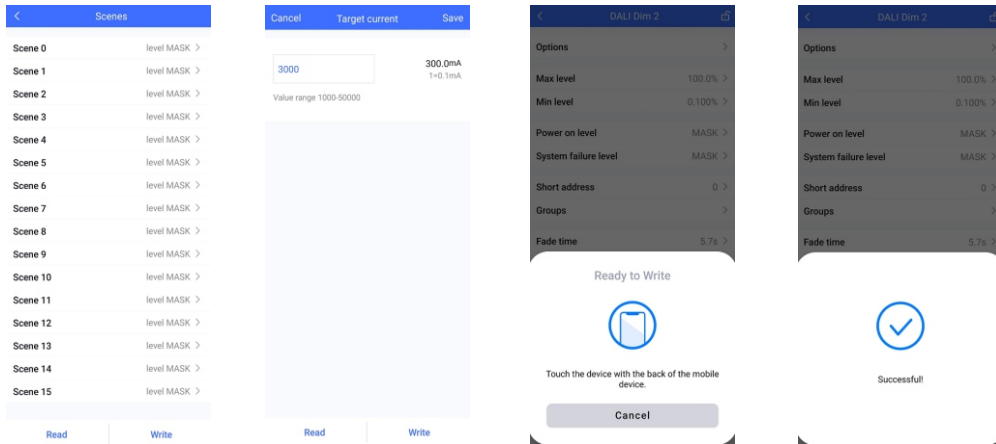


- Note:**
1. You have to unlock the device then do some settings
 2. Only when the corresponding function is selected, the function interface will be displayed.

Step 4: Few parameter interface, you can choose the setting based on your requirements.



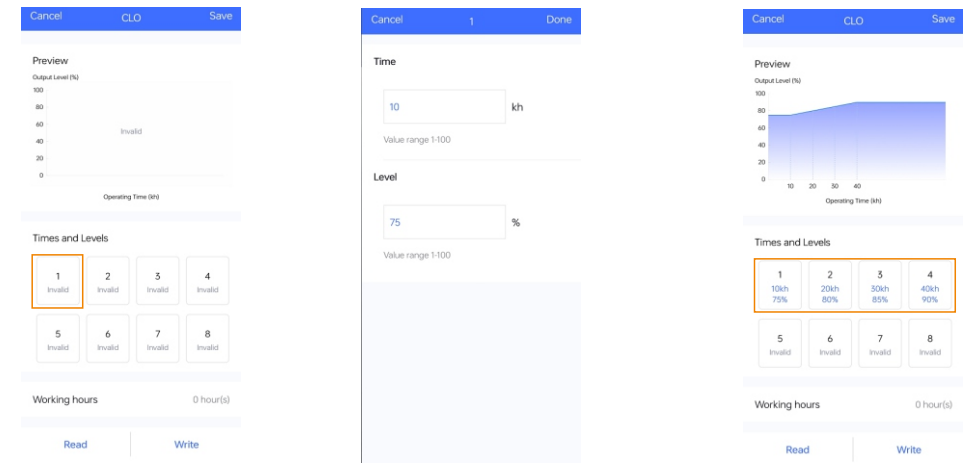
Step 5: After setting, please save the selected configuration via NFC and power on the device.



Tips

1. NFC function doesn't require any power driver.
2. Many functions can be configured by NFC. Kindly check your desired functions.
3. All of our DALI drivers are in the best performance within our DALI master/ gateway.

2. Enter CLO Setting homepage



Enable CLO function

Click "1", and set its time and level

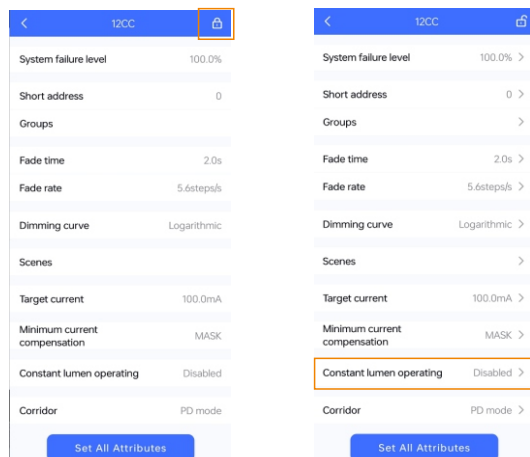
Set your desired time and levels.
Graphic display

Tips:

Working hours : Ability to calculate the working hours of a single driver.

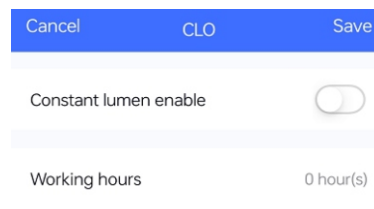
CLO FUNCTION INSTRUCTION

1. Open APP, and Find the CLO function



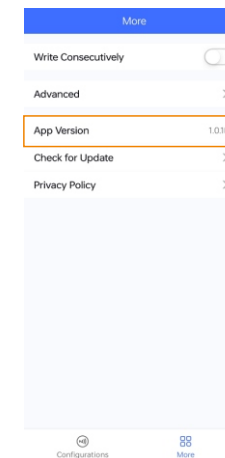
Read From the NFC Driver

Unlock it, and Click here to enter CLO settings



Enable or Disable CLO function

Additional Remarks

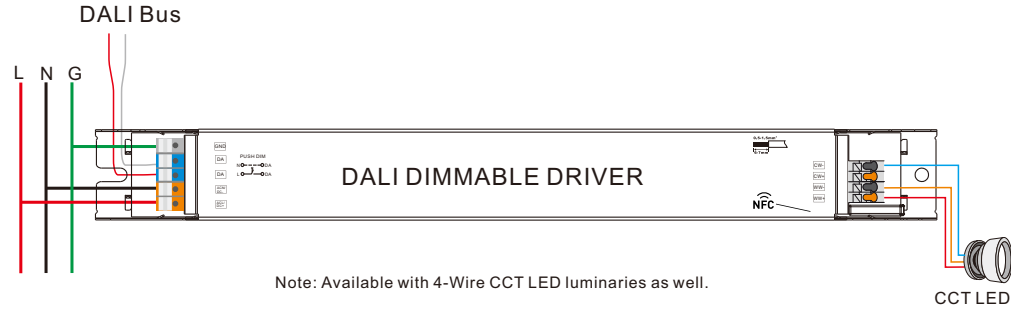


1. Please make sure your APP version is 1.0.10 or higher.
2. Please make sure NFC driver's firmware is available with CLO function.

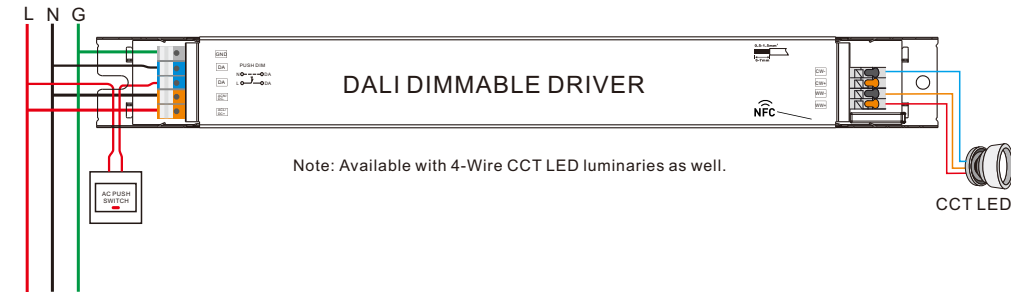
Wiring Diagram

1. With DALI bus

1) With CCT LED luminaire



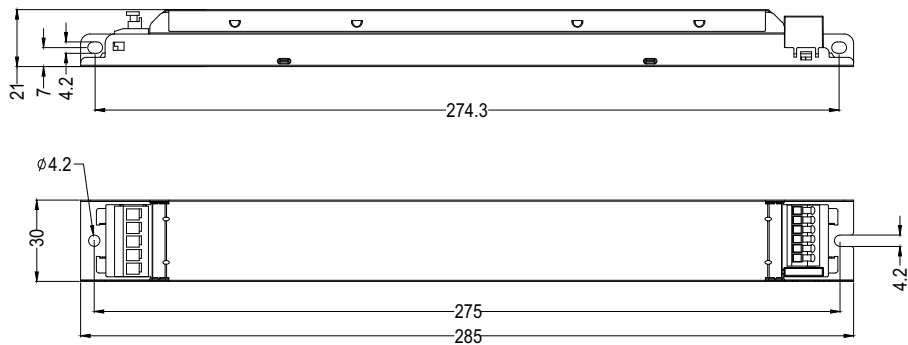
2. With PUSH dimmer



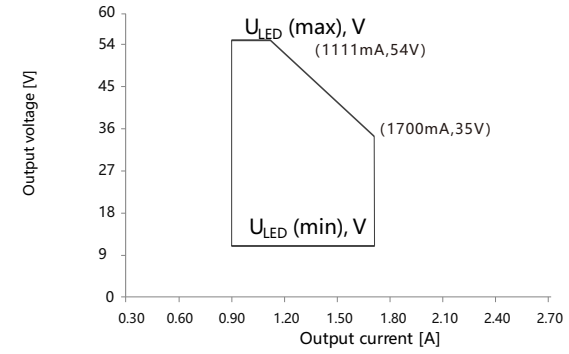
AC Push Function

- 1) Click the button to switch ON/OFF
- 2) Press and hold down the button to increase or decrease light intensity to desired level and release it, then repeat the operation to adjust light intensity to opposite direction. The dimming range is from 1% to 100%.
- 3) Double click the button to switch between brightness mode and color temperature mode.
- 4) Press and hold down the button to change color temperature under color temperature mode.

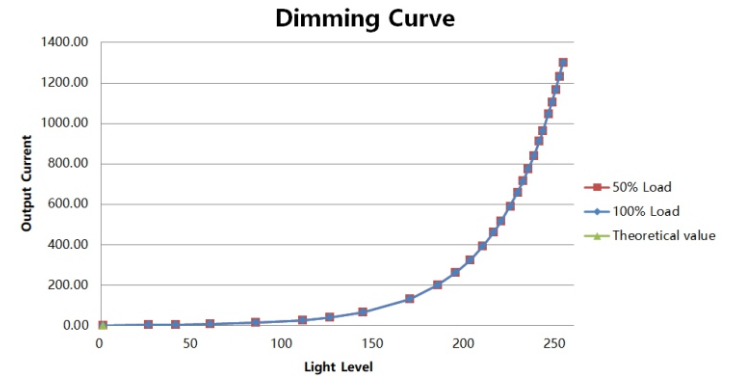
Product Dimension



Operating window



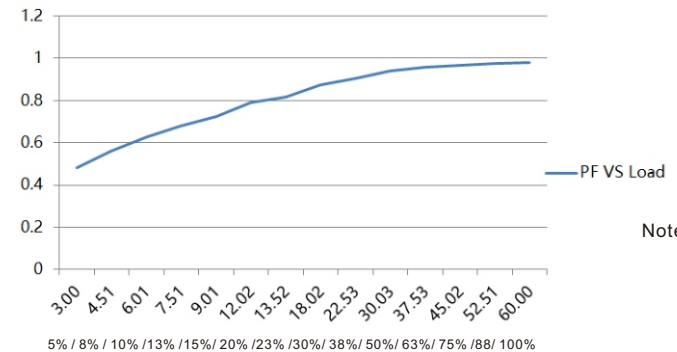
Dimming Curve



Note: Test data under 1300mA gear

Driver Performance

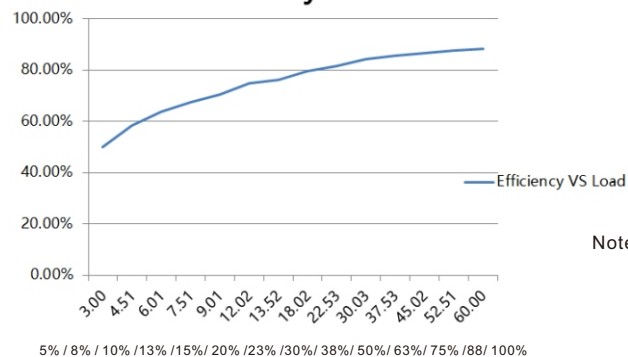
PF VS Load



Note: Test data under 1500mA gear

Driver Performance

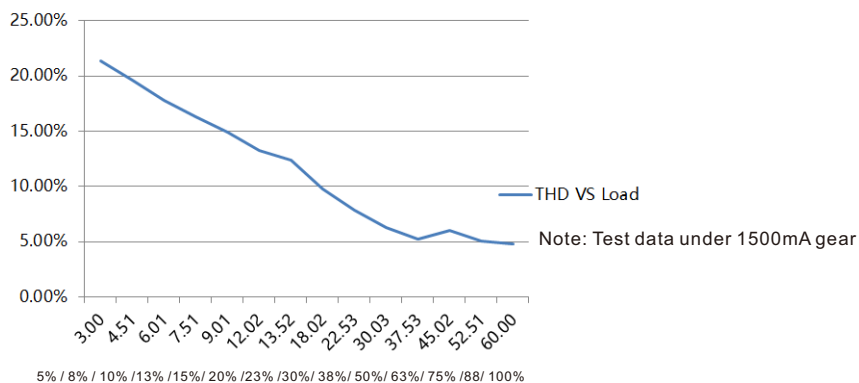
Efficiency VS Load



Note: Test data under 1500mA gear

Driver Performance

THD VS Load



Note: Test data under 1500mA gear

Expected Lifetime

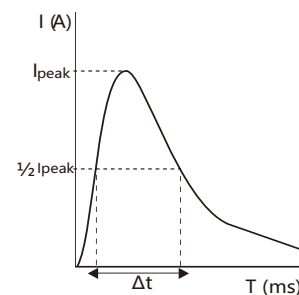
Module Number	Output current	Ta	30 °C	40 °C	45 °C	•••	60 °C
			Tc	52 °C	62 °C	66 °C	•••
SRPL-2305N-60CC900-1700	900 – 1700 mA						
SRPL-2309N-60CCT900-1700	900 – 1700 mA	Lifetime	> 100,000 h	> 80,000 h	> 60,000 h		> 25,000 h

The LED driver is designed for a lifetime stated above under reference conditions.

The relation of tc to ta temperature depends also on the luminaire design.

MCB Load Quantity

Module Number	Ipeak	Twidth	Max. quantity of LED Driver per MCB															
			B10	B13	B16	B20	B25	C10	C13	C16	C20	C25	D10	D13	D16	D20	D25	
SRPL-2305N-60CC900-1700	25.9A	148µs	15	20	24	30	38	18	23	28	35	44	20	26	32	40	50	
SRPL-2309N-60CCT900-1700	25.9A	148µs	15	20	24	30	38	18	23	28	35	44	20	26	32	40	50	



Note:

- 1.Those MCB parameters are based on ABB S200 series circuit breakers.
- 2.For different brands and models of miniature circuit breakers, the quantity of drivers will have difference.
- 3.Please do not exceed the above-mentioned quantity during on-site installation, and the specific load quantity shall be subject to on-site installation.
- 4.When the installation environment temperature of MCBs exceeds 30°C or when multiple MCBs are installed side by side, the number of mounted drives will be reduced, which requires recalculation.
- 5.Type C MCB's are strongly recommended to use with LED lighting

Update log

Date	Version	Update content	Update by
2023-9-1	V1.5	Parameter Update	Romeo

Note: Subject to change without notice. Please contact us if you have any questions.