

Manual Instruction

AC Triac Knob Dimmer(2.4G)

Model No.: TW01RF

1. Product feature

- Support 2.4G RF Remote control.
- 0~100% dimming smoothly, flicker-free.
- Adopt back edge phase dimming.
- Set the lowest brightness by key.
- Temperature detecting switch, with overheat protection and automatic recover function.
- Overloading protection, automatic power limit.
- Signal Auto-Transmitting and mode auto-synchronization function.
- Standard 86*86 wall remote.
- Support Smartphone App control (need 2.4GHz Gateway).
- V0 class anti-fire case.

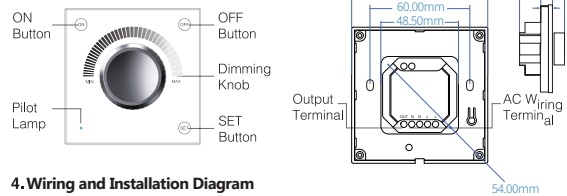
2. Technical Specification

Input voltage: AC 100V ~240V 50/60Hz
 Output voltage: AC 100V ~240V 50/60Hz
 Output current: Max 1.4A
 Max Output Power: 154W@110V 308W@220V
 Working Temperature: Ta: -20°C~40°C
 Control Distance: 30m(Open and barrier-free)
 Product Size: 86*86*48mm(Length*width*height)

2.1 Supported Loading type

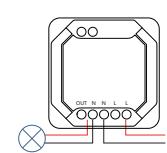
| Loading type | Max Output Power |
|---|---------------------|
| Dimmable LED light | 100W@110V 200W@220V |
| Triac Dimming LED Power Supply | 100W@110V 200W@220V |
| Incandescent lamps and high voltage halogen lamps | 154W@110V 308W@220V |

3. Product Structure and Size

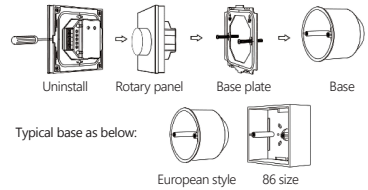


4. Wiring and Installation Diagram

4.1 Wiring diagram:



4.2 Installation diagram:



⚠ Notes: Before powering on device, ensure that all wires connection are correct. Otherwise the product will be damaged.

5. Product Function

5.1 Function of the key

| Button | Operation | Function |
|--------|---|--|
| Knob | Rotating | Brightness Dimming |
| ON | Short Press | Turn ON the light |
| OFF | Short Press | Turn OFF the light |
| SET | Long press the "SET" for 5 seconds, then release the button. | The pilot lamp start blink slowly (blink once per second), the device enter remote link/unlink mode. |
| | Long press the "SET" for 25 seconds, then release the button. | The pilot lamp start blinking quickly (blink once per 0.1 second), the device enter minimum brightness setting mode. |

5.2 Enter Remote Linking Status:

Any of the following 2 methods can make the device enter linking mode:

(1) Power off the controlled dimmer for 10s and then power on again. When the dimmer enter linking mode.

Link: Short press the RF remote Zone "ON" for 3 times within 5s, the lights will blink 3 times slowly means linking successfully.

Unlink: Short press linked RF remote Zone "ON" for 5 times within 5s, the lights will blink 10 times quickly, means the unlink successfully.

(2) Long press the "SET" for 5 seconds, when the pilot lamp start blink slowly. Release the button, when the device enter linking mode.

Link: Short press the RF remote Zone "ON" for 3 times within 5s, the lights will blink 3 times slowly means linking successfully.

Unlink: Short press linked RF remote Zone "ON" for 5 times within 5s, the lights will blink 10 times quickly, means the unlink successfully.

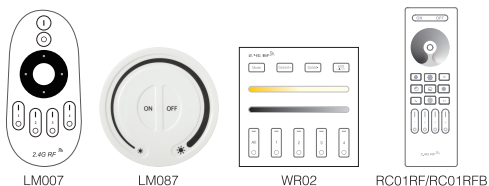
Note: The linking mode just can be kept in 5 seconds, after 5 seconds, please above steps.

5.3 Minimum brightness setting

(1) Long press SET button for over 25 seconds, when the pilot lamp start blinking quickly (blink once per 0.1 second), release the button, the device enter minimum brightness setting, users can rotate the knob to select 7 grade minimum brightness. They are 5%, 10%, 15%, 20%, 25%, 30%, 35%. (The default minimum brightness is 25%).

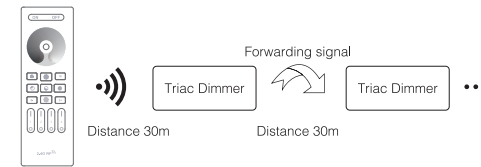
(2) Stop above operation. After 10 seconds, exit the minimum brightness setting and restore the luminous state before operation.

6. Compatible remote control (purchase separately



7. Signal Auto-transmitting instruction

The dimmer can forward the received remote control signal to another dimmer within 30m, as long as there is a dimmer per 30m, the control distance can be unlimited.



8. Malfunction analysis and elimination

| Malfunction | Reason | Solution |
|--|----------------------------|-----------------------------------|
| the light isn't working | No power or wrong wiring | Check the power supply and wiring |
| During operation, the light is automatically turned off and automatically restored after a period of time. | Dimmer overheat protection | Reduce the loading power |

9. Attention

1. When installing the device, please switch off the power to ensure safety.
2. The product can not be installed to the area near flammable and explosive materials.
3. Please check whether the input voltage is consistent with the device.
4. Non-professional users should not disassemble the equipment directly, otherwise it may cause electric shock or damage the equipment.
5. Do not use the device in the vicinity of a large metal area or strong electromagnetic waves, otherwise the remote control distance will be seriously affected.

