

Manual Instruction

AC Triac Knob Dimmer(2.4G+Zigbee3.0) Model No.: TW01Z

1. Product feature

- Support Zigbee 3.0 standard protocol, compatible with all kinds of Zigbee 3.0 gateway, such as Alexa, Smartthings, Tuya, Philips Hue, etc.
- Support 2.4G RF Remote control.
- 0~100% dimming smoothly, flicker-free.
- Adopt back edge phase dimming.
- Set the lowest brightness by key.
- Temperature detecting switch, with overheat protection and automatic recover function.
- Overloading protection, automatic power limit.
- Signal Auto-Transmitting and mode auto-synchronization function.
- Standard 86*86 wall remote.
- Support Smartphone App control (need Zigbee 3.0 Gateway).
- V0 class anti-fire case.

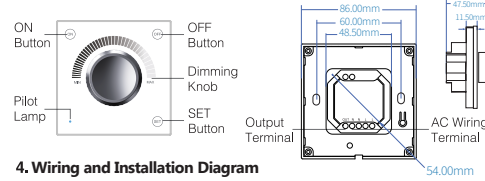
2. Technical Specification

Input voltage: AC 100V ~240V 50/60Hz
Output voltage: AC 100V ~240V 50/60Hz
Output current: Max 1.4A
Max Output Power: 154W@110V 308W@220V
Working Temperature: Ta: -20°C~40°C
Control Distance: 30m(Open and barrier-free)
Product Size: 86*86*48mm(Length*width*height)

2.1 Supported Loading type

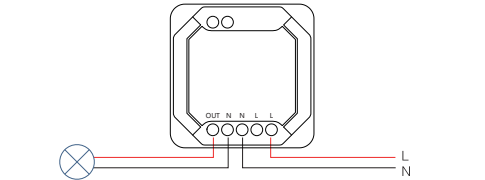
Loading type	Max Output Power
Dimmable LED Light	100W@110V 200W@220V
Triac Dimming LED Power Supply	100W@110V 200W@220V
Incandescent lamps and high voltage halogen lamps	154W@110V 308W@220V

3. Product Structure



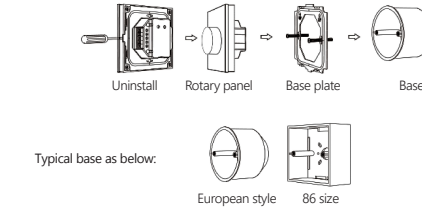
4. Wiring and Installation Diagram

4.1 Wiring diagram:



⚠ Notes: Before powering on device, ensure that all wires connection are correct. Otherwise the product will be damaged

4.2 Installation diagram:



5. Product Function

5.1 Function of the key

Button	Operation	Function
Knob	Rotating	Brightness Dimming
ON	Short Press	Turn ON the light
OFF	Short Press	Turn OFF the light
SET	Long press the "SET" for 5 seconds, then release the button.	The pilot lamp start blink slowly (blink once per second), the device enter remote link/unlink mode.
	Long press the "SET" for 15 seconds, then release the button.	The pilot lamp start blink middle speed (blink once per 0.4 second), the device enter APP smart link mode.
	Long press the "SET" for 25 seconds, then release the button.	The pilot lamp start blinking quickly (blink once per 0.1 second), the device enter minimum brightness setting mode.

5.2 Enter Remote Linking Status:

Any of the following 2 methods can make the device enter linking mode:
(1) Power off the controlled dimmer for 10s and then power on again, When the dimmer enter linking mode.

Link: Short press the RF remote Zone "ON" for 3 times within 5s, the lights will blink 3 times slowly means linking successfully.
Unlink: Short press linked RF remote Zone "ON" for 5 times within 5s, the lights will blink 10 times quickly, means the unlink successfully.

(2) Long press the "SET" for 5 seconds, Release the button when the pilot lamp start blink slowly (blink once per second), the device enter linking mode.

Note: The linking mode just can be kept in 5 seconds, after 5 seconds, please above steps.

5.3 When the device is on linking mode, use the remote control to link or unlink.

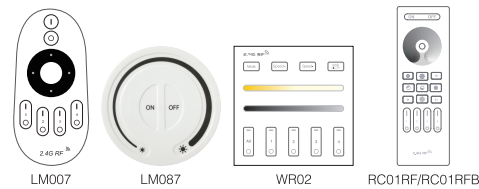
Link: Short press Zone "ON" for 3 times within 5s
Unlink: Short press Zone "ON" for 5 times within 5s

5.4 Minimum brightness setting

(1) Long press SET button for over 25 seconds, when the pilot lamp start blinking quickly (blink once per 0.1 second), release the button, the device enter minimum brightness setting mode, users can rotate the knob to select 7 grade minimum brightness. They are 5%, 10%, 15%, 20%, 25%, 30%, 35%. (The default minimum brightness is 25%)

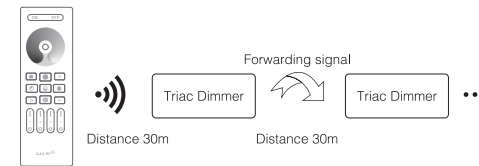
(2) Stop above operation. After 10 seconds, exit the minimum brightness setting and restore the luminous state before operation.

6. Compatible remote control (purchase separately)



7. Signal Auto-transmitting instruction

The dimmer can forward the received remote control signal to another dimmer within 30m, as long as there is a dimmer per 30m, the control distance can be unlimited.



8. Malfunction analysis and elimination

Malfunction	Reason	Solution
the light isn't working	No power or wrong wiring	Check the power supply and wiring
During operation, the light is automatically turned off and automatically restored after a period of time.	Dimmer overheat protection	Reduce the loading power

9. Zigbee 3.0 APP Control Instruction

9.1 Download and install [Tuya Smart] APP or [Smart Life] APP

Search for [Smart Life] in Apple or Google store or scan following QR code to download and install the app.

Please click "Register" button to create account while using it in the first time, Log in directly if you already had account.



9.2 Connect to Smartphone

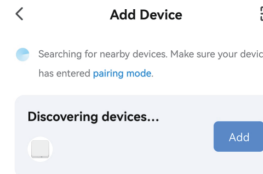
You must link the Tuya Zigbee 3.0 Gateway first to the smartphone, then add the zigbee controller to zigbee gateway for smartphone control.

(1). How to connect zigbee gateway to smartphone. (Note: All Tuya Zigbee 3.0 gateway in market can works on our Zigbee controller; Here we use our wireless Zigbee 3.0 gateway for example).

First, Power the zigbee gateway, and long press the "SET" button until the red indicating lamp blinking.

Second, when the red indicating lamp blink, open the Smart Life APP, and press "Add Device".

It will discover the new device automatically, then Press "Add" to complete the linking.



(2). Add the Triac Knob Dimmer into Zigbee Gateway.

First, make the Dimmer enter smart link mode, any of the 3 following steps can make it enter smart link mode:

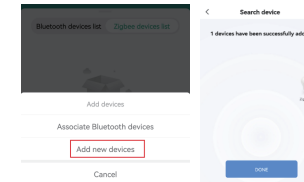
1. Power ON-OFF 4 times (ON-OFF-ON-OFF-ON-OFF-ON), when the pilot lamp blink 3 times, the device is on the smart link mode.

2. Long press the "SET" for 15 seconds, then release the button, when the pilot lamp start blink middle speed (blink once per 0.4 second), the device enter APP smart link mode.

3. Power OFF the Knob triac dimmer, then long press and hold the linked remote Zone ON button, do not release, then power ON the dimmer again, when the pilot lamp blink 3 times, the dimmer enter APP smart link mode.

Note: When the device is on smart link mode, please complete the smart link to APP within 5 minutes, otherwise please do above steps to smart link again.

Second, Press "Add new devices" on the APP, it will automatically find the zigbee device, then complete the linking. Added device will be displayed on the homepage after added successfully, then Click device you want to control to enter the control interface.



10. Attention

1. When installing the device, please switch off the power to ensure safety.
2. The product can not be installed to the area near flammable and explosive materials.
3. Please check whether the input voltage is consistent with the device.
4. Non-professional users should not disassemble the equipment directly, otherwise it may cause electric shock or damage the equipment.
5. Do not use the device in the vicinity of a large metal area or strong electromagnetic waves, otherwise the remote control distance will be seriously affected.

